

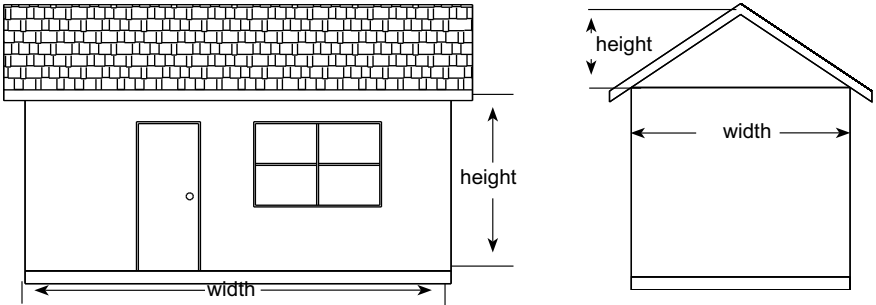
# Material Take-off

---

This planning guide will help you determine the amount of Novabrik and its accessories required to complete your project. You may also refer to our estimating sheet under the “**Get A Quote**” section on the Novabrik web site or on the corporate CD-rom.

## Step 1

Make sketches of the home showing all sides.



## Step 2

Measure the height of each side (excluding gables) and multiply by the width to obtain the surface area.

For gables, measure the height at center, add 1' (300mm) to allow for waste, and multiply by 1/2 of the width to obtain the surface area.

Add the areas together.

## Step 3

Measure all windows, doors and any other area that will not be covered with Novabrik. Multiply the width by the height of each area, then add the results.

## Step 4

Take the result of Step 2 and subtract it from the result obtained in Step 3. Add 2% for waste. This will give you your Total Square Footage.

Multiply the Total Square Footage by the coverage factor (refer to the inside front cover of the Installation Guide) to obtain the required number of Novabrik.

# Material Take-off

---

## **Starter Strip**

Add the length of each wall plus the width of all doors and windows to calculate the total length of starter strip needed (refer to the inside cover of this guide).

## **Door and Window Trim** (check availability)

Calculate the sides and top of all windows to obtain the required length of the window trim, add them together. Repeat this step with the doors.

## **Furring Strip 1" x 3" (19mm x 64mm) or 1" x 4" (19mm x 89mm)**

Make sure you have enough furring strips to overlay all of the framing studs, and enough to wrap around all windows and doors.

## **Window Sill / Wainscot Cap**

Measure and record the width of each window separately to determine the total length of window sill needed. Order enough sills so that you can use larger pieces under each window, with as few joints as possible.

## **Construction Adhesive**

Use PL® Premium polyurethane construction adhesive or equivalent.

## **Corner Block**

Measure the height of each wall at the corner (in feet) and multiply by the coverage factor (refer to the inside cover of this guide) to find the number of corner blocks needed. Add 10% for waste.

## **Housewrap**

Calculate the area for all of the walls add them together to obtain the amount of housewrap needed.

## **Corrosion-resistant Screws**

Calculate 1.5 screws per sq. ft.. This will give you enough screws to attach the furring strips and the Novabrik.

For coastal areas (less than 5 miles (8 km) from the ocean) or near any corrosive environment (e.i. highways) use stainless steel fasteners.

When attaching the veneer's wood furring strips to preservative-treated wood, fasteners should be of hot dipped zinc coated galvanized steel.