

Insulation, Openings and Housewrap

Before going into details regarding the preparation work and installation of Novabrik, here are a few important notes on insulation, flashing and housewrap for your home.

Insulation

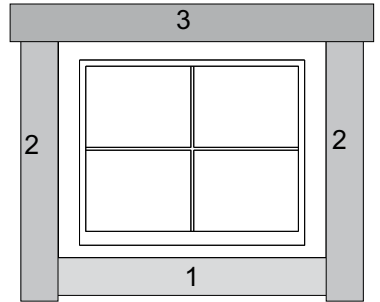
If you're replacing an old siding, this is a perfect time to insulate your house from the exterior. Use rigid insulation, extruded polystyrene foam type, and fasten the furring strips through the insulation into the studs using longer screws.

Thermal Control

Walls retrofitted with thermal insulation must meet the requirements for heat transfer, air leakage and condensation control of your local Building Code.

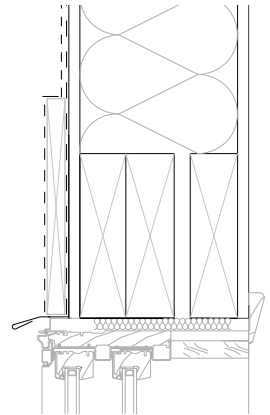
Openings

Seal the flanges around the window with a self-adhesive waterproof membrane. Start at the bottom (1), follow the sides (2) and, finish with the top (3). Make sure to overlap the waterproof membrane properly. Ensure that adhesive flashing is adequately bonded to the vapor/air barrier and in full contact with the perimeter surface opening.



Housewrap

When installing a housewrap, make sure it is properly layered where necessary. Overlap layers at least 6" (150mm) and tape the seams with a tape from an approved manufacturer.



Note: For clarity reasons, housewrap and flexible flashing are not shown on all drawings in this booklet.