

Installation Above Openings

This page shows the installation of a horizontal course above openings. Install a 3/4" (19mm) thick plywood reinforcement header sized according to the header reinforcement section. Cover this header with a housewrap or a waterproof membrane.

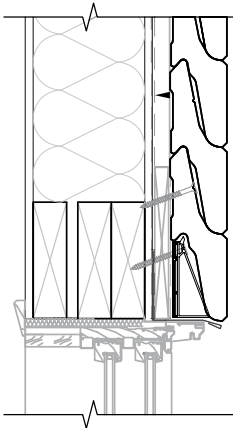
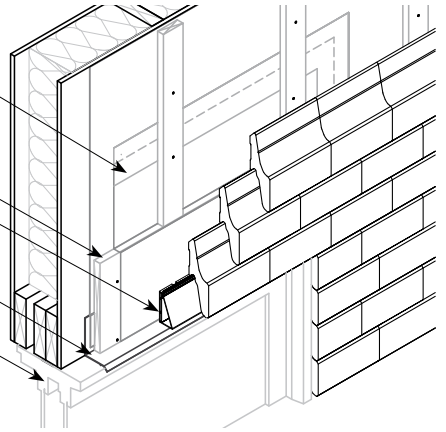
A continuous housewrap or a waterproof membrane tucked under housewrap

Plywood reinforcement header

Starter Strip

Aluminum or steel flashing

Window frame



- Install aluminum or steel flashing above opening.
- Cover plywood and metallic flashing with a waterproof membrane or housewrap.
- Locate the "V" mark on the starter strip flange, cut with a utility knife and snap it off.
- Install and level your starter strip above the opening.
- Locate the screw point location on the starter strip and fasten with #8 or #10 x 2 1/2" (64mm) corrosion resistant screws at every 16" (400mm) c/c.
- Install and screw each Novabrik on the Starter Strip with a #8 or #10 x 2 1/2" (64mm) corrosion resistant screw at every 16" (400mm) c/c.

If you do not have a full brick above the opening, cutting will be required (see detail beside). Cut the starter strip as well so you have a level line to install the bricks. Installing a soldier course is a very attractive alternative to horizontal cuts (see soldier course installation section).

