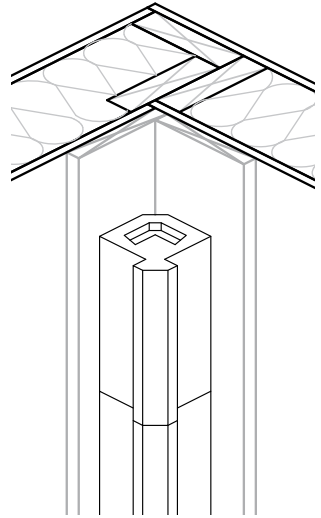
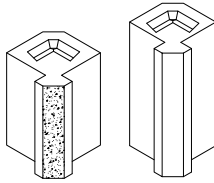


90° Interior Corner

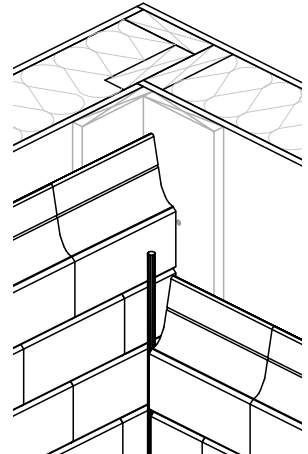
Interior corners are built using an interior corner block or by overlapping one brick facing over the other.



- Install 1" x 6" (19mm x 140mm) boards over the corner of the house. Correct out of plumb or uneven corners at this point.
- Pre-drill a hole at a 30° downward angle in each corner block. Align the holes towards the studs of the wall.
- Use a 4" (100mm) long corrosion-resistant screw to fasten each block. Apply construction adhesive between blocks.

90° Interior Corner - Overlapping Bricks Method

- At each interior corner fasten 1" x 6" (19mm x 140mm) boards to the structural frame and cover with a waterproof membrane.
- Use a waterproof membrane between the furring strips and the wall to protect sheathing against moisture.
- Install Novabrik on one wall all the way up to the corner.
- Cut and adjust flanking pieces to achieve a consistent 3/8" (10mm) gap.
- Once both walls are finished, insert a foam backer rod (have the foam backer rod compressed by 50%) and apply a bead of sealant down the entire joint between the bricks.



Plan to make the bead of sealant the least apparent. For example, install the brick on the wall parallel to the street all the way to the corner.